



**BREVARD COUNTY**  
BOARD OF COUNTY COMMISSIONERS

**INTER-OFFICE  
MEMORANDUM**

**UTILITY SERVICES**

TO: UTILITY SERVICES DEPARTMENT  
FROM: RON VOLL, INTERIM UTILITY SERVICES DIRECTOR  
SUBJECT: MODIFICATION TO LIFT STATION STANDARDS  
DATE: JUNE 6, 2011

As provided for in Section 1.1 of the Criteria for Water and Sanitary Sewerage Systems Within Brevard County, I am hereby modifying the text of the Criteria, dated January 2005, as follows.

- 1) Delete the following sections from within the body of the text of the Criteria in their entirety.

13.1.2	General
13.4.1	Control Panel
13.4.10	Control Panel Components and Wiring
13.4.13	Electrical Components List

- 2) Insert in place of the deleted section 13.1.2 the following section.

13.1.2 Two or more pumps are required. Each pump shall have equal capacity and each shall be capable of handling the anticipated maximum flow. Pumps shall be ABS or Flygt products. Pump controls and panels shall be provided by the pump supplier or vendor of record consistent with the most recent version of the control standards maintained by Brevard County Utility Services.

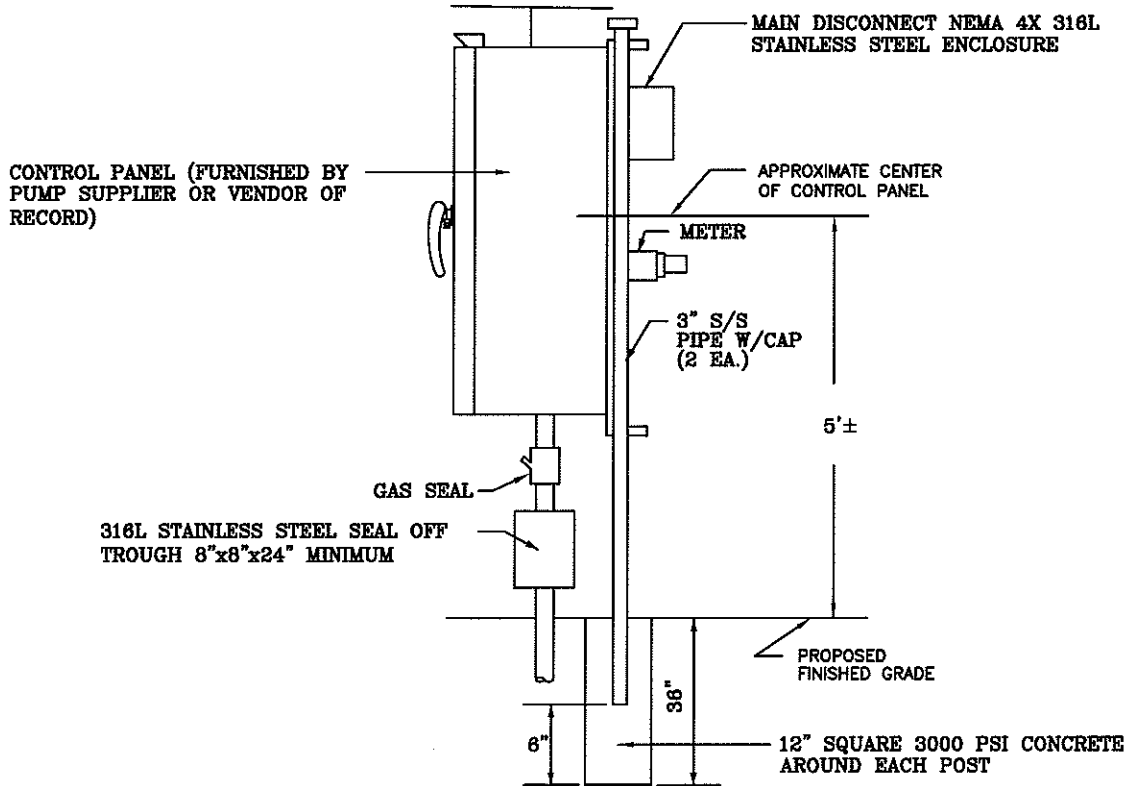
- 3) Delete the following drawings from the Criteria in their entirety.

Sewer Standard No. 12 (Page SSS-58)  
Sewer Standard No. 12A (Page SSS-59)

- 4) Substitute in place of the deleted drawings Sewer Standard No.12, revised June 2011, attached to this memo.

These changes become effective immediately, except for projects that are currently under construction or already have a notice to proceed.

cc: Craig Helpling, Capital Projects Manager  
Mark Reagan, Utility Engineer  
Wayne Pace, Water and Wastewater Program Manager  
Tammy Hurley, Permit Tech



NOTE: MOUNTING HARDWARE TO BE 316L STAINLESS STEEL

CONTROL PANEL		
SEWER STANDARD NO. 12		
BREVARD COUNTY WATER RESOURCES DEPARTMENT 2725 JUDGE FRAN JAMIESON WAY VIERA, FLORIDA 32940		
N.T.S.	DRN: TEM	JUNE, 2011