

Think Green.®

**Your
Service Days
Are Changing!**
Monday, June 6, 2011



See details inside
or contact our
Customer Service Department
at

(321) 723-4455

centralfloridaservice@wm.com

YARD WASTE SCHEDULE

Garbage & Yard Waste Schedule Collection

Monday and Thursday Garbage Collection

Pineda Cswy. South to Indian River County

Tuesday and Friday Garbage Collection

Rockledge South to Pineda Causeway

Monday - Yard Waste

South of Pineda Cswy. to North Side of 192

Tuesday - Yard Waste

Rockledge South West of I-95

South of Wickham Rd. to Pineda Causeway

Thursday - Yard Waste

192 South to Indian River County

Friday - Yard Waste

Rockledge South to Wickham Rd. East of I-95

Monday and Thursday Beachside Garbage Collection

Eau Gallie Blvd. South to Sebastian Inlet

Tuesday and Friday Beachside Garbage Collection

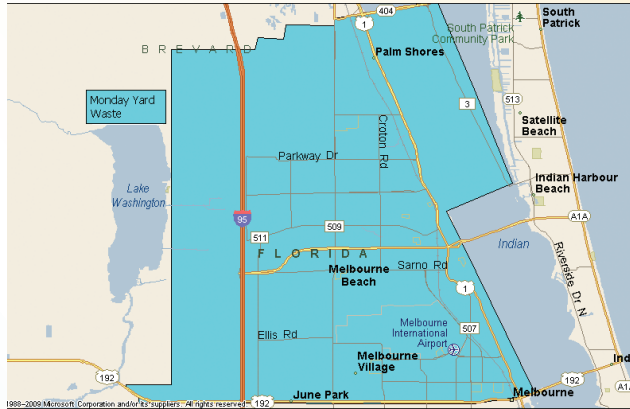
Patrick Air Force Base South to Eau Gallie Blvd.

Wednesday - Beachside Yard Waste

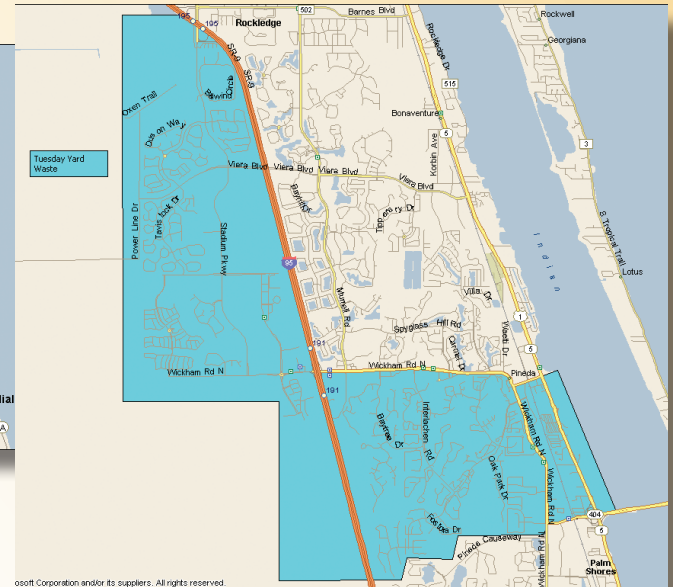
Patrick Air Force Base South to Sebastian Inlet

Wednesday - Recycling

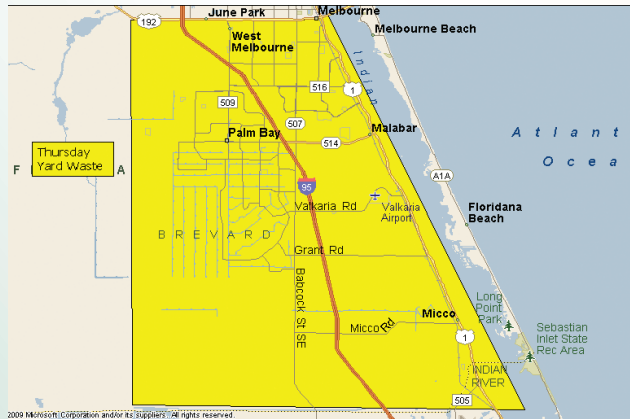
All Recycling will be picked up on Wednesday.



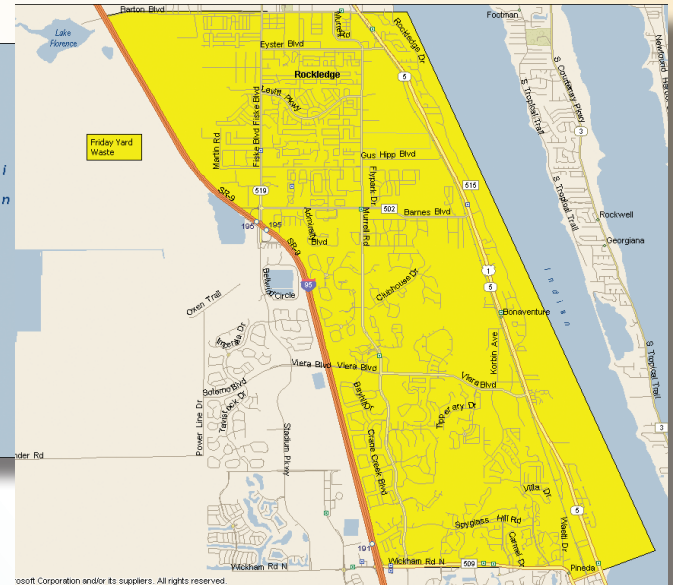
Monday - Yard Waste



Tuesday - Yard Waste



Thursday - Yard Waste



Friday - Yard Waste

There will be no collection on the following holidays:
Memorial Day, Fourth of July, Veterans Day, Thanksgiving and Christmas.
 Service will be provided on your next regularly scheduled service day.

Single Stream Recycling:

Paper

Newspapers, junk mail, magazines, telephone books, catalogues, office paper and brown paper bags.

Plastic

Bleach, detergent, shampoo bottles and bottles with necks #1-7 (number is located on the base of a container). **PLEASE RINSE.**

Metal

Aluminum and aerosol cans, pie pans, and steel food containers. **PLEASE RINSE.**

Cardboard

Food boxes, milk and juice containers and cardboard boxes. **PLEASE FLATTEN CARDBOARD BOXES.**

White Goods, Tire Collection, Electronic Waste Recycling & CFL Bulbs

Please call our Customer Service Department for collection at (321) 723-4455.

Yard Waste:

- We recommend using your old garbage container for yard waste, no larger than 40 gallons.
- Place leaves, pine needles, and yard clippings in the garbage container.
- Cut branches to four-foot lengths, no wider than six-inches in diameter and not over 50 pounds.
- DO NOT use plastic bags for yard waste.
- *Hired landscaping, land clearing or tree trimming services must remove any material that they generate.*

**QUESTIONS? Call us at
(321) 723-4455
for answers!**