

**BREVARD COUNTY, FLORIDA  
ANNUAL OPERATING AND CAPITAL BUDGET  
FOR FY 2009-2010**



# INTRODUCTION

## HOW TO READ AND USE THIS BUDGET DOCUMENT

The Adopted Budget for Brevard County for the Fiscal Year 2009-2010 includes the following major components:

### **The Budget Message**

The Budget Message provides an overview of the Budget, highlights the County's response to the needs of the community, the direction provided by the Board of County Commissioners, and other factors affecting the development of the Budget.

### **General Information**

This section provides general and historical information about the County and its budgets, as well as information concerning the effect of County property taxes on a typical single family homestead. A description of the budget preparation philosophy and process, historical information, descriptions of the services provided, and a description of the budget structure and governmental (fund) accounting are included.

### **Budget and Financial Policies**

The Budget and Financial Policies adopted by Brevard County, Board of County Commissioners.

### **Financial Indicators and Major Revenues**

Brief historical summaries of key financial indicators based on the County's Comprehensive Annual Financial Reports are presented here. Additionally, brief descriptions and histories of the County's major sources of revenue are included.

### **Budget Summaries**

The County's total budget is summarized by revenue sources, appropriations by category, and fund. Also included are summaries of Countywide or Non-Countywide Programs, Budgeted Employee Positions, and charts depicting the summaries listed above.

### **Department, Office, and Agency Budgets**

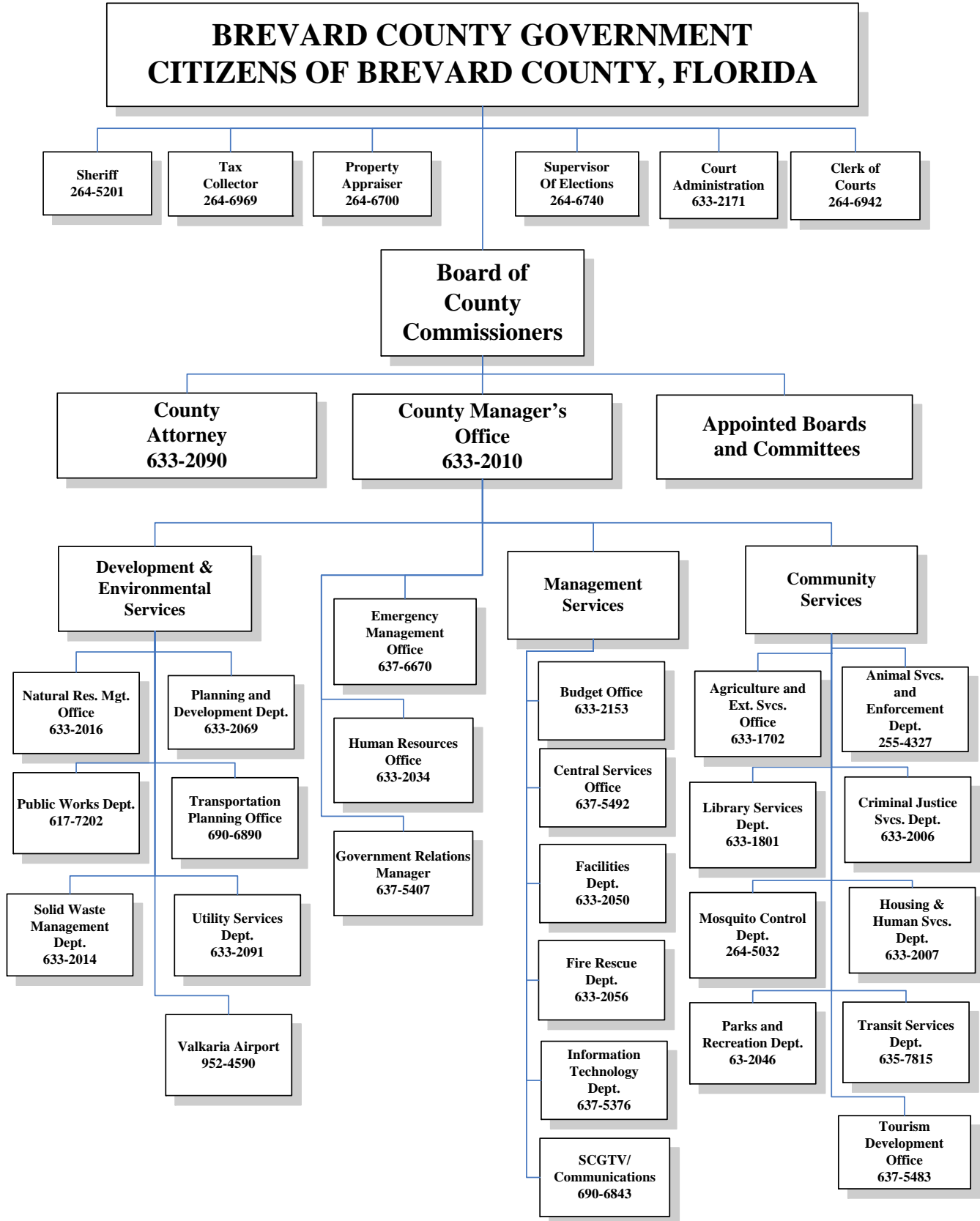
Included in each segment is an organizational/functional chart of each department, office or agency. This is followed by a Departmental Summary, which provides an overview of the Department's mission and budget and a list of the programs provided by the agency. A summary of the Department's budget is followed by Program Profiles of the various programs which comprise the departmental operations. Included in the Program Profile is a summary of the budget for that program and a listing of the major services included in the program. Also included are listings of proposed travel, and capital acquisitions and projects. In a few instances, Program Profiles are further divided into "Service Level" presentations which follow the Program Profile.

The various departments, offices or agencies are presented in alphabetical order within several broad categories which include: *Board of County Commissioners* directed agencies; the operating agencies which comprise the *Charter Officers* of the County; the operating entities which comprise the County-funded portion of *Court Operations*; and the *Outside Agencies* which comprise the subordinate component units of the County government of Brevard County, Florida, as well as those private agencies which provide services which might otherwise be direct functions of the County.

### **Appendices**

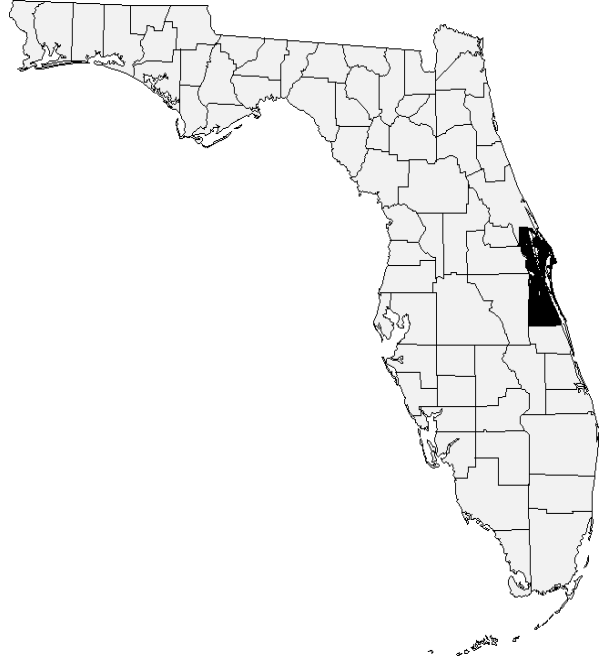
Glossary.

# INTRODUCTION



# INTRODUCTION

## BREVARD COUNTY GOVERNMENT COUNTY OFFICIALS



### BOARD OF COUNTY COMMISSIONERS

Chuck Nelson, Chairman .....	District 2
Mary Bolin, Vice-Chairperson.....	District 4
Robin Fisher, .....	District 1
Trudie Infantini .....	District 3
Andy Anderson .....	District 5

### CHARTER OFFICERS

Scott Ellis .....	Clerk of the Circuit Court
Jim Ford .....	Property Appraiser
J.R. "Jack" Parker .....	Sheriff
Lori Scott.....	Supervisor of Elections
Lisa Cullen .....	Tax Collector

### STAFF

Howard Tipton.....	County Manager
Scott L. Knox .....	County Attorney

## INTRODUCTION

### ACKNOWLEDGEMENTS

Special recognition should be given to the following for their efforts in the development and preparation of the FY 2009-2010 Budget for Brevard County, Florida:

**The Board of County Commissioners**, for their continuous involvement in and direction of the budget process.

**Stockton Whitten, Interim County Manager and County Budget Officer**, for his direction and support.

**Assistant County Manager Mel Scott and Interim Assistant County Manager Frank Abbate**, for their early participation and efforts within their areas of control.

**Department Directors, Agency Managers, Charter Officers and their Staffs**, for their efforts in the development of their portion of this budget.

**The County Finance Department**, for technical information and assistance.

The Current Budget Office Staff

<b>Thomas Rosenberg</b>	<b>Budget Director</b>
<b>Elizabeth Nagy Swanke</b>	<b>Assistant Budget Director</b>
<b>Stacey Claridge</b>	<b>Budget Analyst II</b>
<b>Sean Meshberger</b>	<b>Budget Analyst II</b>
<b>Paul Bessler</b>	<b>Budget Analyst II</b>
<b>Constance Lea</b>	<b>Budget Analyst I</b>
<b>Pamela Wallace</b>	<b>Special Projects Coordinator</b>