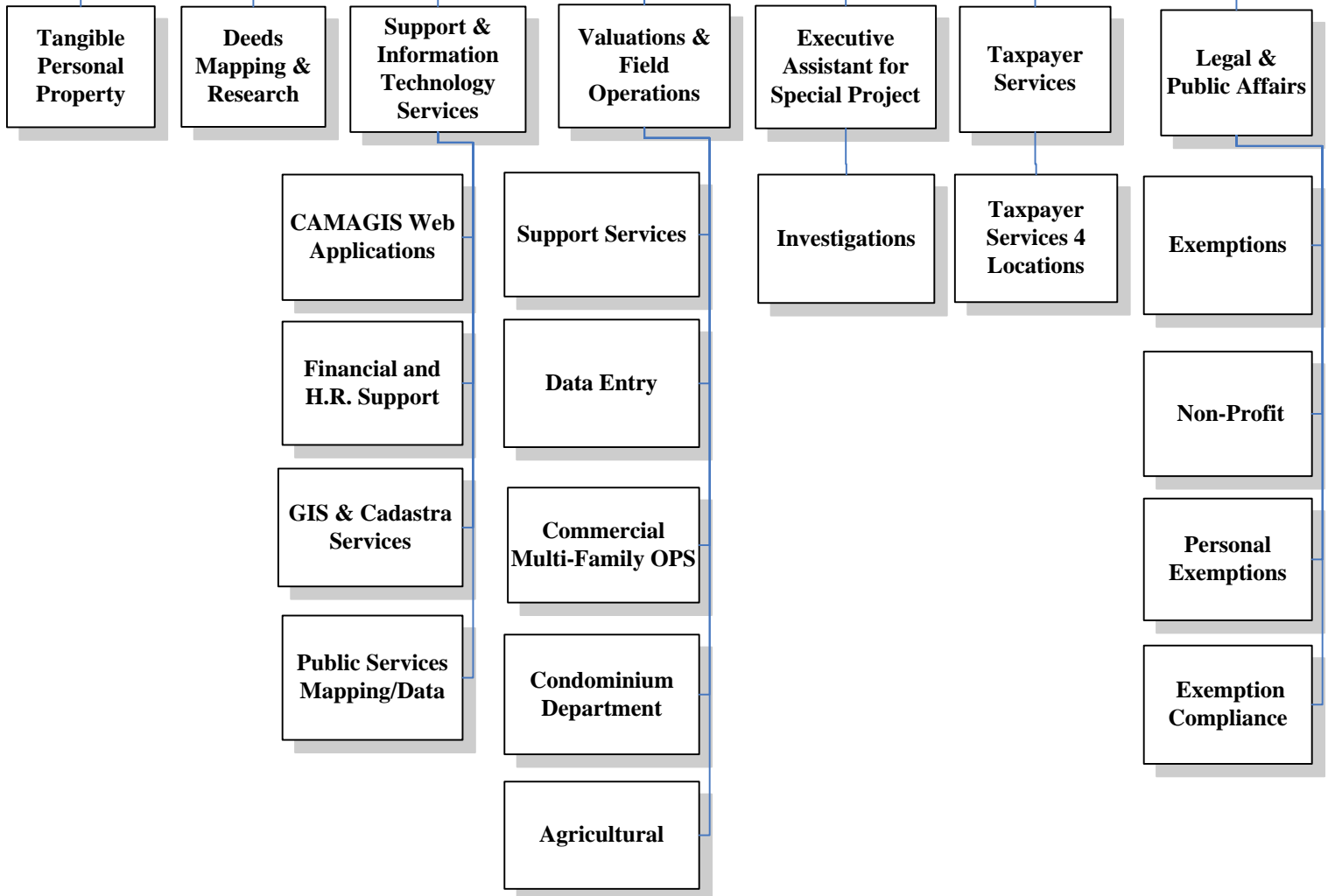


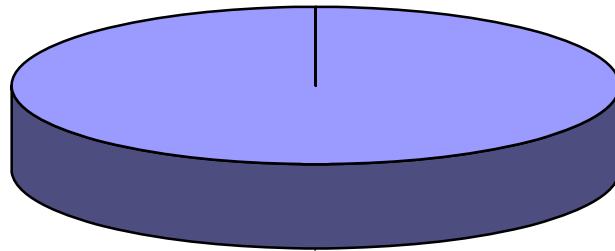
# Property Appraiser Programs and Services



**PROPERTY APPRAISER - GENERAL FUND SUPPORTED**

**OPERATING REVENUES (SOURCES) FY 2009-2010**

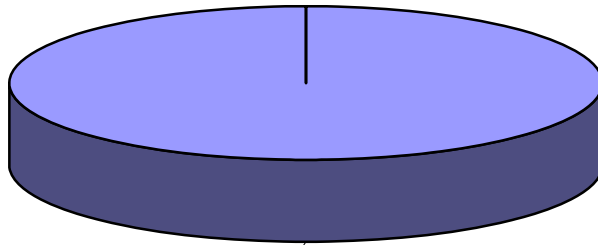
**TOTAL BUDGET \$8,494,376**



Transfers - General  
Revenue  
100.00%

**OPERATING EXPENDITURES (USES) FY 2009-2010**

**TOTAL BUDGET \$8,494,376**



Transfers  
100.00%

Note: Total percentage may not equal 100% due to rounding.

**PROPERTY APPRAISER - GENERAL FUND SUPPORTED: SUMMARY**

**MISSION STATEMENT:**

The Brevard County Property Appraiser, an independently elected charter officer, determines the value of all real and tangible personal property within the County and maintains all records related to such valuations; administers and approves applications for homestead and other exemptions as well as agricultural classifications. The Property Appraiser also calculates the proposed taxes for the State of Florida's Truth in Millage notices after the tentative millages have been set by the taxing authorities.

**PROGRAMS AND SERVICES:**

The Property Appraiser's duties are prescribed by State Statutes with oversight and budget approval by the Florida Department of Revenue.

**TRENDS AND ISSUES:**

Section 192.091, Florida Statutes, specifies that the Property Appraiser is paid on a commission basis whereby the Property Appraiser bills the several taxing authorities including the County for services rendered based on the State-approved budget.

The Property Appraiser does not submit a budget to the County Commission pursuant to section 129.03 (2) of the Florida Statutes. A copy of the Property Appraiser's Office State Department of Revenue Budget format is distributed separately from this budget document.

Charges to support the Property Appraiser's budget, as provided by law, are based on a pro-rata basis for all authorities that levied a tax during the preceding fiscal year. The School Board and municipalities are excluded from this charge for services by Florida Statutes. The effect of the Florida Statutes is that the County, particularly the General Fund, provides a large portion of the charges for the Property Appraiser's Office that would otherwise be provided by the School Board and municipalities. The Property Appraiser also provides data sharing and services allowing for the uniform method of levying and collecting non-ad valorem assessments levied by the County for real property.

**PROPERTY APPRAISER - GENERAL FUND SUPPORTED: DEPARTMENT SUMMARY**

**DEPARTMENT REVENUES AND EXPENDITURES**

	<b>Actual FY2006-2007</b>	<b>Actual FY2007-2008</b>	<b>Final Budget FY2008-2009</b>	<b>Adopted Budget FY2009-2010</b>	<b>% Inc/(Dec)</b>
<b>REVENUES:</b>					
Taxes	\$0	\$0	\$0	\$0	
Permits, Fees & Spec. Assess.	\$0	\$0	\$0	\$0	
Intergovernmental	\$0	\$0	\$0	\$0	
Charges for Services	\$0	\$0	\$0	\$0	
Fines and Forfeits	\$0	\$0	\$0	\$0	
Miscellaneous	\$0	\$0	\$0	\$0	
Statutory Reduction	\$0	\$0	\$0	\$0	
<i>Operating Revenues:</i>	\$0	\$0	\$0	\$0	
Balance forward - Operating	\$0	\$0	\$0	\$0	
Balance forward - Capital	\$0	\$0	\$0	\$0	
Balance forward - Restricted	\$0	\$0	\$0	\$0	
Transfers - General Revenue	\$9,367,016	\$9,189,096	\$8,880,603	\$8,494,376	(4.35%)
Transfers - Others	\$0	\$0	\$0	\$0	
Other Finance Sources	\$0	\$0	\$0	\$0	
<i>Non-Operating Revenues:</i>	\$9,367,016	\$9,189,096	\$8,880,603	\$8,494,376	(4.35%)
<b>TOTAL REVENUES:</b>	\$9,367,016	\$9,189,096	\$8,880,603	\$8,494,376	(4.35%)
<b>EXPENDITURES:</b>					
Compensation and Benefits	\$0	\$0	\$0	\$0	
Operating Expenses	\$0	\$0	\$0	\$0	
Capital Expenditures	\$0	\$0	\$0	\$0	
Grants and Aid	\$0	\$0	\$0	\$0	
<i>Operating Expenditures:</i>	\$0	\$0	\$0	\$0	
Debt Service	\$0	\$0	\$0	\$0	
Reserves - Operating	\$0	\$0	\$0	\$0	
Reserves - Capital	\$0	\$0	\$0	\$0	
Reserves - Restricted	\$0	\$0	\$0	\$0	
Transfers	\$9,501,916	\$9,188,596	\$8,880,603	\$8,494,376	(4.35%)
<i>Non-Operating Expenditures:</i>	\$9,501,916	\$9,188,596	\$8,880,603	\$8,494,376	(4.35%)
<b>TOTAL EXPENDITURES:</b>	\$9,501,916	\$9,188,596	\$8,880,603	\$8,494,376	(4.35%)
<b>PERSONNEL:</b>					
Full-time Positions	0.00	0.00	0.00	0.00	
Part-time Positions	0.00	0.00	0.00	0.00	
Full-time Equivalent	0.00	0.00	0.00	0.00	
Temporary FTE	0.00	0.00	0.00	0.00	
Seasonal FTE	0.00	0.00	0.00	0.00	