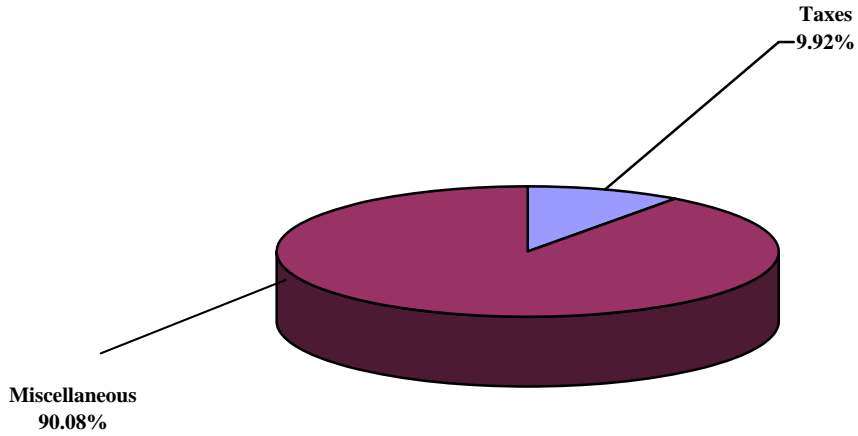
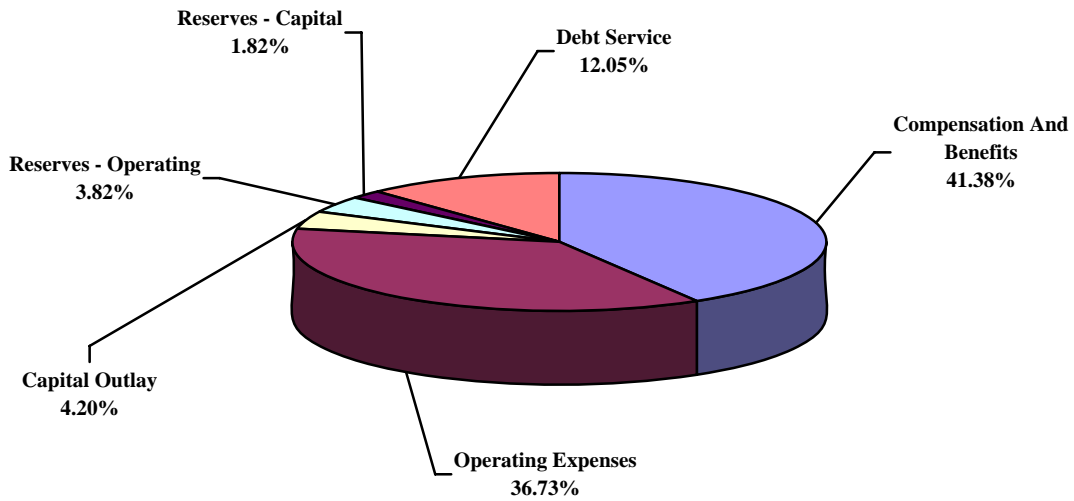


TITUSVILLE-COCOA AIRPORT AUTHORITY

**OPERATING REVENUES (SOURCES) FY 2005-2006
TOTAL BUDGET \$1,928,241**



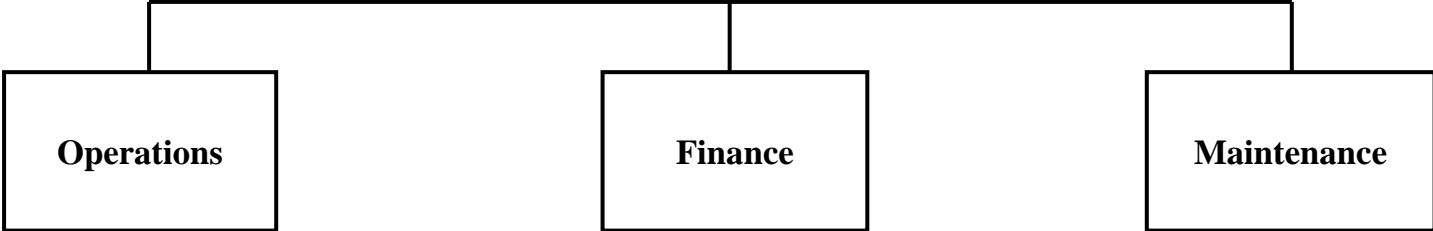
**OPERATING EXPENDITURES (USES) FY 2005-2006
TOTAL BUDGET \$1,928,241**



Note: Total percentage may not equal 100% due to rounding.

**Titusville-Cocoa (TICO)
Airport Authority
Board of Directors**

Administration



**Space Coast
Executive
Airport**

**Merritt Island
Airport**

**Arthur Dunn
Airport**

TITUSVILLE-COCOA AIRPORT AUTHORITY: SUMMARY

MISSION STATEMENT:

To advance Brevard County as the Premier Corporate/General Aviation Gateway in Central Florida Business Commerce.

PROGRAMS AND SERVICES:

Arthur Dunn Airpark
Operations, Maintenance, and Improvements

Space Coast Regional Airport
Operations, Maintenance, and Improvements

Merritt Island Airport
Operations, Maintenance, and Improvements

TRENDS AND ISSUES:

The Titusville-Cocoa Airport Authority is a subordinate tax district of Brevard County. The Board of County Commissioners authorize the tax levy and approves the Titusville Cocoa Airport Authority's operating budget. Revenue producing and infrastructure projects that insure the eventual self-sufficiency of the Titusville-Cocoa Airport Authority are high priorities. A five-year Strategic Plan for the Space Coast Regional Airport has been adopted by the Airport Authority's Board and is being employed in this effort. Titusville-Cocoa Airport Authority will play an important role in the economic development activities in Brevard County.

Completed site developments have included the Corporate Terminal, land purchase and taxiway improvements. Air traffic remains steady and all hangars are rented, with a waiting list at each of the 3 Authority facilities.

TITUSVILLE-COCOA AIRPORT AUTHORITY: BUDGET ANALYSIS

TICO AIRPORT AUTHORITY

REVENUES:

Operating Revenues increase 5.81% due primarily to an increase in hanger rental income.

EXPENDITURES:

Operating Expenditures increase 5.44% due primarily to increases in promotional activities and replacement capital.

Non-Operating Expenditures increase 7.54% due to an increase in operating reserves.

TITUSVILLE-COCOA AIRPORT AUTHORITY: SUMMARY

DEPARTMENT REVENUES AND EXPENDITURES:					
	Actual FY 2003-2004	Final Budget FY 2003-2004	Final Budget FY 2004-2005	Adopted Budget FY 2005-2006	% Inc (Dec)
REVENUES:					
Taxes	\$0	\$183,118	\$182,161	\$201,424	10.57%
Licenses And Permits	\$0	\$0	\$0	\$0	
Intergovernmental	\$0	\$0	\$0	\$0	
Charges For Services	\$0	\$0	\$0	\$0	
Fines and Forfeits	\$0	\$0	\$0	\$0	
Miscellaneous	\$0	\$1,592,031	\$1,640,241	\$1,736,888	5.89%
Statutory Reduction	\$0	\$0	\$0	(\$10,071)	
<i>Operating Revenues:</i>	\$0	\$1,775,149	\$1,822,402	\$1,928,241	5.81%
Balance Forward - Operating	\$0	\$0	\$0	\$0	
Balance Forward - Capital	\$0	\$0	\$0	\$0	
Balance Forward - Restricted	\$0	\$0	\$0	\$0	
Transfers - General Revenue	\$0	\$0	\$0	\$0	
Transfers - Others	\$0	\$0	\$0	\$0	
Other Finance Sources	\$0	\$0	\$0	\$0	
<i>Non-Operating Revenues:</i>	\$0	\$0	\$0	\$0	
TOTAL REVENUES	\$0	\$1,775,149	\$1,822,402	\$1,928,241	5.81%
EXPENDITURES:					
Compensation And Benefits	\$0	\$746,881	\$774,748	\$797,915	2.99%
Operating Expenses	\$0	\$631,235	\$655,509	\$708,272	8.05%
Capital Expenditures	\$0	\$35,000	\$75,000	\$81,000	8.00%
<i>Operating Expenditures:</i>	\$0	\$1,413,116	\$1,505,257	\$1,587,187	5.44%
Debt Service	\$0	\$180,000	\$232,440	\$232,440	0.00%
Reserves - Operating	\$0	\$76,245	\$49,705	\$73,614	48.10%
Reserves - Capital	\$0	\$105,788	\$35,000	\$35,000	0.00%
Reserves - Restricted	\$0	\$0	\$0	\$0	
Transfers	\$0	\$0	\$0	\$0	
<i>Non-Operating Expenditures:</i>	\$0	\$362,033	\$317,145	\$341,054	7.54%
TOTAL EXPENDITURES	\$0	\$1,775,149	\$1,822,402	\$1,928,241	5.81%

PERSONNEL:					
Full-time Positions	15.00	15.00	15.00	15.00	0.00%
Part-time Positions	0.00	0.00	0.00	0.00	
Internal Support Services FTE	0.00	0.00	0.00	0.00	
Full-time Equivalent (FTE)	15.00	15.00	15.00	15.00	0.00%
Temporary FTE	0.00	0.00	0.00	0.00	
Seasonal FTE	0.00	0.00	0.00	0.00	

TITUSVILLE-COCOA AIRPORT AUTHORITY: CAPITAL OUTLAY SUMMARY

DESCRIPTION	QUANTITY	UNIT COST	FUNDING SOURCE	TOTAL COST
Vehicle	1	\$40,000	Fees	\$40,000
Mower	1	\$15,000	Fees	\$15,000
Pickup Truck	1	\$20,000	Fees	\$20,000
TOTAL FOR PROGRAM:				\$75,000

¹ Expenditures for equipment with a value in excess of \$750 and an expected life of more than one year (e.g. automobiles and furniture).

TICO AIRPORT AUTHORITY: RENEWAL AND REPLACEMENT PROGRAM

TICO AIRPORT AUTHORITY

Equipment Type	Funding Source	FY 2005-2006	FY 2006-2007	FY 2007-2008	FY 2008-2009	FY 2009-2010
Tractor Replace when uneconomical to repair.	Fees	\$35,000	\$0	\$0	\$0	\$0