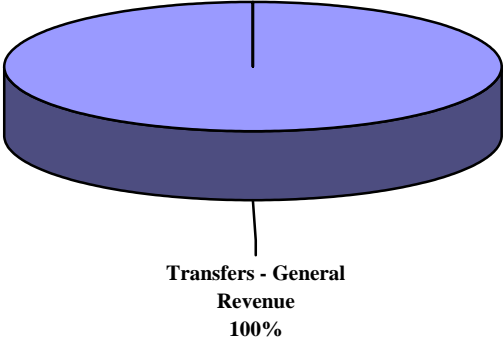
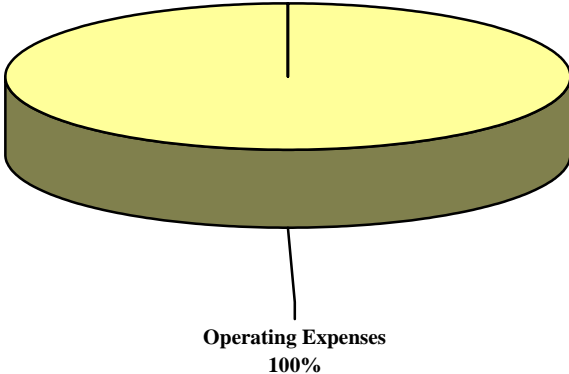


ECONOMIC DEVELOPMENT COMMISSION

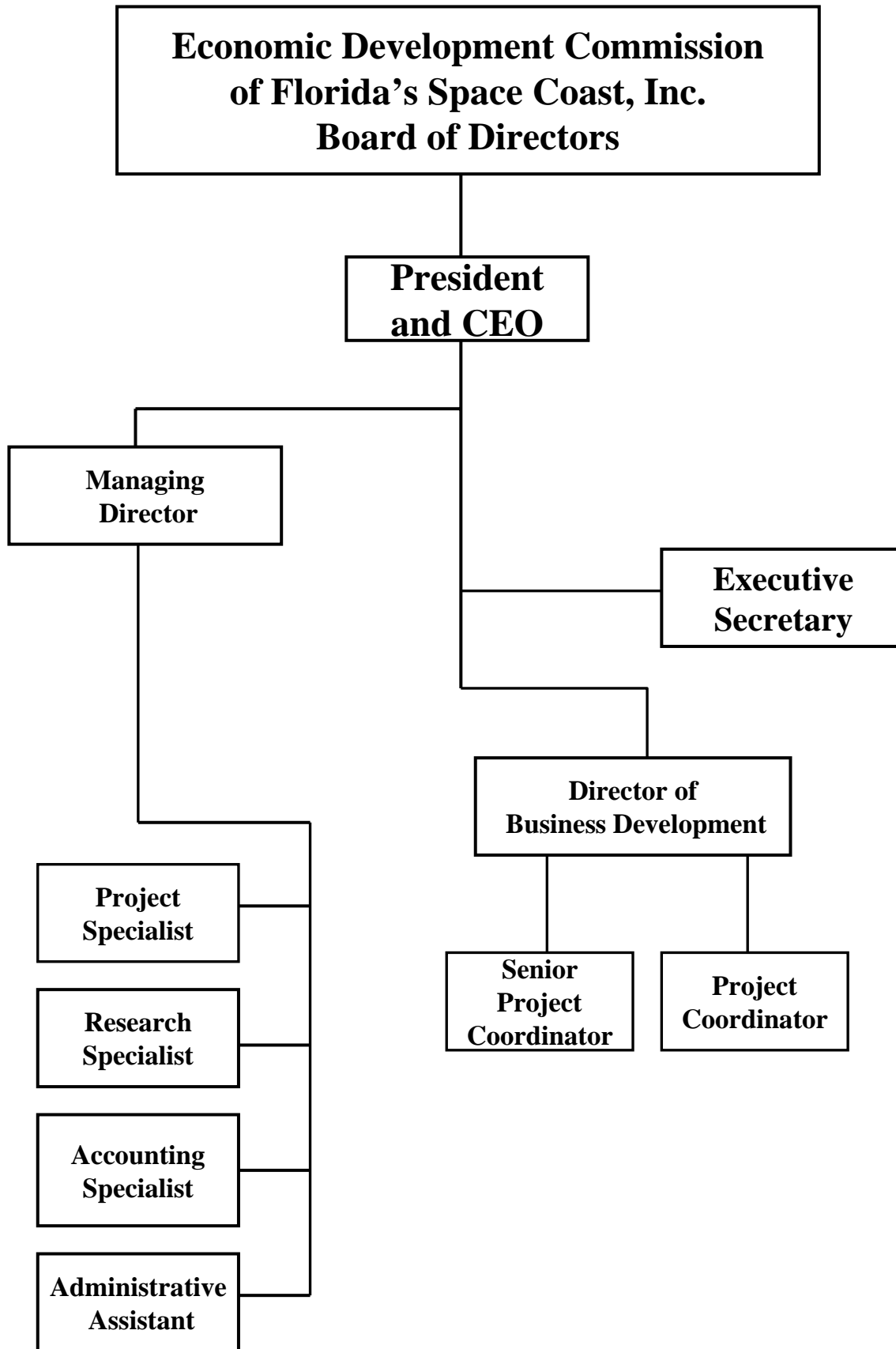
**OPERATING REVENUES (SOURCES) FY 2005-2006
TOTAL BUDGET \$990,000**



**OPERATING EXPENDITURES (USES) FY 2005-2006
TOTAL BUDGET \$990,000**



Note: Total percentage may not equal 100% due to rounding.



ECONOMIC DEVELOPMENT COMMISSION: SUMMARY

MISSION STATEMENT:

Contribute to enhancing and ensuring Brevard's quality of life by improving the economy of Brevard County through the attraction of new business and industry, as well as the retention and expansion of existing local business and industry. Providing a strategic approach to enhancing the overall business climate in Brevard County.

PROGRAMS AND SERVICES:

Existing Industry

- Existing Industry Expansion Assistance
- Wage/Labor Analysis Performed for Expansion Clients
- Support Business Community Through Manufacturing & High Tech Company Visitations
- Distribute International Trade Leads & Encourage Linkages
- Communicate Monthly With Area Manufacturing and High Tech Companies
- Market All State Incentive Programs
- Host Needed Conferences/Seminars for Manufacturers to Enhance Business Climate
- Provide Workforce Development Assistance to Existing Manufacturers and High Tech Employers
- Market Opportunities and Suppliers in Brevard to Outside Companies Via Sales Missions/Trade Missions

Manufacturing Investment

- Prospect New Business Investment for Brevard
- Provide Wage/Labor, Technical Data, Etc.
- Company Site Tours
- Measure Impact of Relocations
- Market Opportunities in Brevard Via Sales Missions/Trade Missions
- Enhance Electronic Marketing via EDC Web Site for Site Relocation Consultants
- Provide Workforce Development Assistance to Manufacturers and High Tech Employers Interested in Brevard

Research/Publications

- Update EDC Related Publications
- Update Brevard County Economic Profile
- Execute Economic Indicators Quarterly
- Enhance and Maintain Inventory of Available Buildings
- Demographic/Technical Data Provided to Citizens and Clients
- Wage/Labor/Analysis Performed
- Industrial Revenue Bond Assessment
- Ad Valorem Tax Abatement Assessment and Recommendation

Space Initiative

- Interact with companies currently in the post hardware stages of development of manned and unmanned launch
- Conduct necessary strategic communications in regards to the positioning of KSC as it relates to NASA's vision for space exploration.
- Promote Kennedy Space Center business development opportunities

TRENDS AND ISSUES:

The efforts of the EDC have resulted in the expansion or relocation of several projects including Aircraft Engine Services in Titusville; Delta Group Electronics in Rockledge; and MC Assembly in Palm Bay. The increased number of manufacturing jobs generated by these companies are expected to make a significant economic impact on Brevard County and will create new jobs for our citizens. The EDC's prospect activity has increased significantly over the last year, with more companies and site location consultants seeing the services of the EDC and in making investments in Brevard County. A formal Space Act Agreement was signed with NASA at Kennedy Space Center between the EDC and Kennedy Space Center that formalizes the relationship between the two organizations. The EDC managed the high profile, extremely competitive relocation project for EADS North America, thereby providing national and international recognition of Brevard County that will ultimately have a positive impact on future economic development initiatives.

Continued emphasis will occur in the following areas: Space and the New Launch Vehicle; Workforce Development; Training; Higher Education and Manufacturing Investment - Technology Development; International Trade; Academic Linkages; General Promotion of Brevard to Expanding Companies.

ECONOMIC DEVELOPMENT COMMISSION: BUDGET ANALYSIS

ECONOMIC DEVELOPMENT COMMISSION:

REVENUES:

Revenues increased 5.32% due to an increase in the General Fund transfer for the Space Initiative program.

EXPENDITURES:

Expenditures increased 5.32% for expenses associated with the Space Initiative program.

ECONOMIC DEVELOPMENT COMMISSION; FL'S SPACE COAST: SUMMARY

DEPARTMENT REVENUES AND EXPENDITURES:					
	Actual FY 2003-2004	Final Budget FY 2003-2004	Final Budget FY 2004-2005	Adopted Budget FY 2005-2006	% Inc (Dec)
REVENUES:					
Taxes	\$0	\$0	\$0	\$0	
Licenses And Permits	\$0	\$0	\$0	\$0	
Intergovernmental	\$0	\$0	\$0	\$0	
Charges For Services	\$0	\$0	\$0	\$0	
Fines and Forfeits	\$0	\$0	\$0	\$0	
Miscellaneous	\$0	\$0	\$0	\$0	
Statutory Reduction	\$0	\$0	\$0	\$0	
<i>Operating Revenues:</i>	\$0	\$0	\$0	\$0	
Balance Forward - Operating	\$0	\$0	\$0	\$0	
Balance Forward - Capital	\$0	\$0	\$0	\$0	
Balance Forward - Restricted	\$0	\$0	\$0	\$0	
Transfers - General Revenue	\$795,000	\$795,000	\$940,000	\$990,000	5.32%
Transfers - Others	\$0	\$0	\$0	\$0	
Other Finance Sources	\$0	\$0	\$0	\$0	
<i>Non-Operating Revenues:</i>	\$795,000	\$795,000	\$940,000	\$990,000	5.32%
TOTAL REVENUES	\$795,000	\$795,000	\$940,000	\$990,000	5.32%
EXPENDITURES:					
Compensation And Benefits	\$0	\$0	\$0	\$0	
Operating Expenses	\$795,000	\$795,000	\$940,000	\$990,000	5.32%
Capital Expenditures	\$0	\$0	\$0	\$0	
<i>Operating Expenditures:</i>	\$795,000	\$795,000	\$940,000	\$990,000	5.32%
Debt Service	\$0	\$0	\$0	\$0	
Reserves - Operating	\$0	\$0	\$0	\$0	
Reserves - Capital	\$0	\$0	\$0	\$0	
Reserves - Restricted	\$0	\$0	\$0	\$0	
Transfers	\$0	\$0	\$0	\$0	
<i>Non-Operating Expenditures:</i>	\$0	\$0	\$0	\$0	
TOTAL EXPENDITURES	\$795,000	\$795,000	\$940,000	\$990,000	5.32%

PERSONNEL:					
Full-time Positions	0.00	0.00	0.00	0.00	
Part-time Positions	0.00	0.00	0.00	0.00	
Internal Support Services FTE	0.00	0.00	0.00	0.00	
Full-time Equivalent (FTE)	0.00	0.00	0.00	0.00	
Temporary FTE	0.00	0.00	0.00	0.00	
Seasonal FTE	0.00	0.00	0.00	0.00	